

**DICHIARAZIONE DI CONFORMITÀ / DECLARATION OF CONFORMITY / DÉCLARATION DE CONFORMITÉ
 KONFORMITÄTSERKLÄRUNG / DECLARACION DE CONFORMIDAD / DECLARAÇÃO DE CONFORMIDADE**

Dichiara sotto la propria responsabilità che il prodotto:

- Declares under its own responsibility that the following product:
- Déclare sous sa propre responsabilité que le produit:
- Erklärt auf eigene Verantwortung, daß das Produkt
- Declara, bajo su propia responsabilidad, que el producto:
- Declara, sob a sua responsabilidade, que o produto:

Elettroserratura	EBP, EBP 24, EBPE 24, EBPE 52, EBPE 75
Looking	EBP, EBP 24, EBPE 24, EBPE 52, EBPE 75
Electroserrure	EBP, EBP 24, EBPE 24, EBPE 52, EBPE 75
Elektroschloß	EBP, EBP 24, EBPE 24, EBPE 52, EBPE 75
Electrocerradura	EBP, EBP 24, EBPE 24, EBPE 52, EBPE 75
Secadura electrica	EBP, EBP 24, EBPE 24, EBPE 52, EBPE 75

- È conforme ai requisiti essenziali di sicurezza delle Direttive:

- It also complies with the main safety requirements of the following Directives:

- Est conforme aux exigences essentielles de sécurité des Directives:
- Es entspricht den grundlegenden Sicherheitsbedingungen der Direktiven:
- Es conforme a los requisitos esenciales de seguridad de las Directivas:
- Está conforme aos requisitos essenciais de segurança das Directivas:

BASSA TENSIONE
 LOW VOLTAGE
 BASSE TENSION
 NIEDERSPANNUNG
 BAIXA TENSÃO

7323/CEE, 93/68/CEE (EN 60335-1 (1995))

COMPATIBILITÀ ELETTROMAGNETICA
 ELECTROMAGNETIC COMPATIBILITY
 COMPATIBILITÉ ELECTROMAGNÉTIQUE
 ELEKTROMAGNETISCHE KOMPATIBILITÄT
 COMPATIBILIDAD ELECTROMAGNETICA
 COMPATIBILIDADE ELECTROMAGNETICA

89/336/CEE, 91/263/CEE, 92/31/CEE, 93/68/CEE
 (EN 50081-1, EN50081-2)

SCHIO 01.01.1997

Il Rappresentante Legale / The legal Representative
 Le Représentant Légal / Der gesetzliche Vertreter
 El Representante Legal / O Representante legal



BFT FRANCE BFT S.p.a. ITALIA

Parc Club des Aygaldes
 35 bd capitaine GEZE
 13333 MARSEILLE Cedex 14

Tel. 0491 101860
 Fax 0491 101866

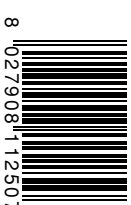
BFT DEUTSCHLAND
 BFT Torantriebssysteme GmbH
 Johannisstr. 14, D-90763 Fürth
 http://www.bft-torantrieb.de

Tel. 0049 91 1 773323
 Fax 0049 91 1 773324



Via Lago di Vico, 44
 36015 Schio (VI)
 Tel.naz. 0445 696511
 Tel.int. +39 0445 696533
 Fax 0445 696522
 Internet: www.bft.it
 E-mail: sales@bft.it

- I** ELETTROSERRATURA
- GB** LOOKING
- F** ÉLECTROSERRETURE
- D** ELEKTROSCHLOSS
- E** ELECTROCERRADURA
- P** SECHADURA ELECTRICA



8 027908 112507

EBP - EBP E

**ISTRUZIONI D'USO E DI INSTALLAZIONE
 INSTALLATION AND USERS MANUAL
 INSTRUCTIONS D'UTILISATION ET D'INSTALLATION
 MONTAGE- und BEDIENUNGSANLEITUNG
 INSTRUCCIONES DE USO Y DE INSTALACION
 INSTRUÇÕES DE USO E DE INSTALAÇÃO**

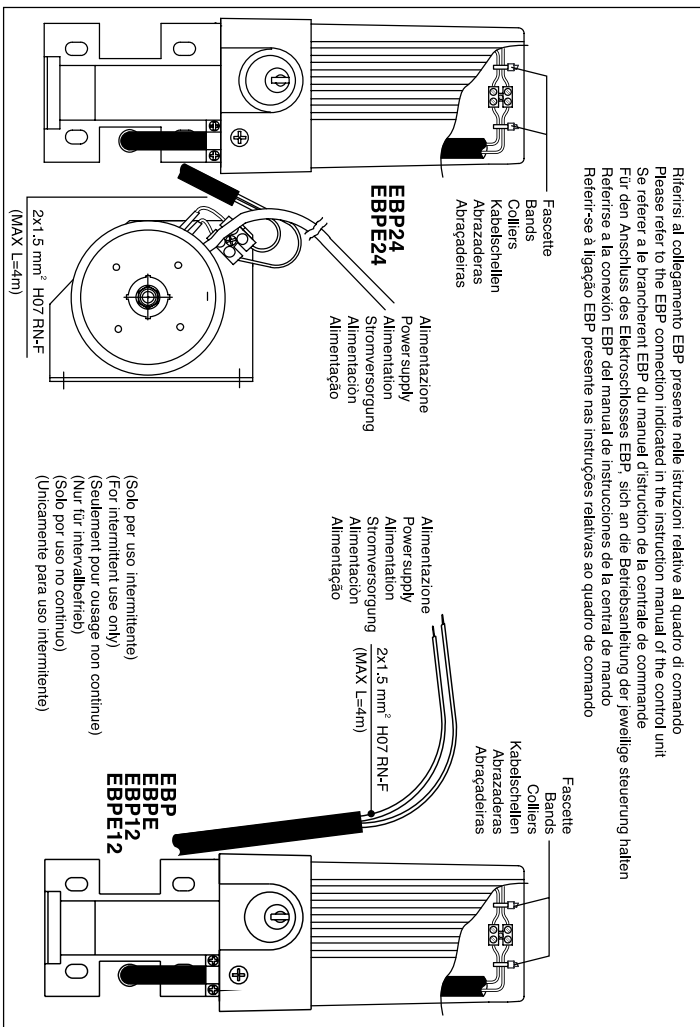
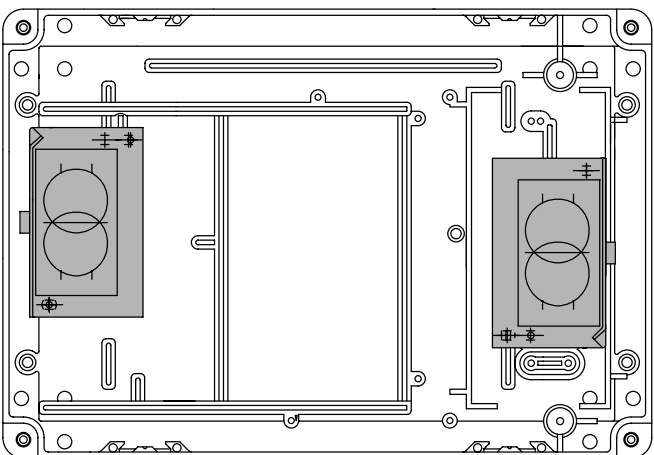
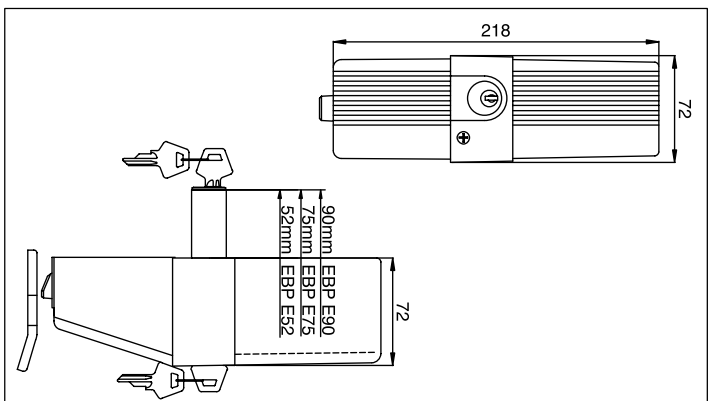


AZIENDA CON SISTEMA QUALITÀ
 CERTIFICATO DA DNV
 UNI EN ISO 9001

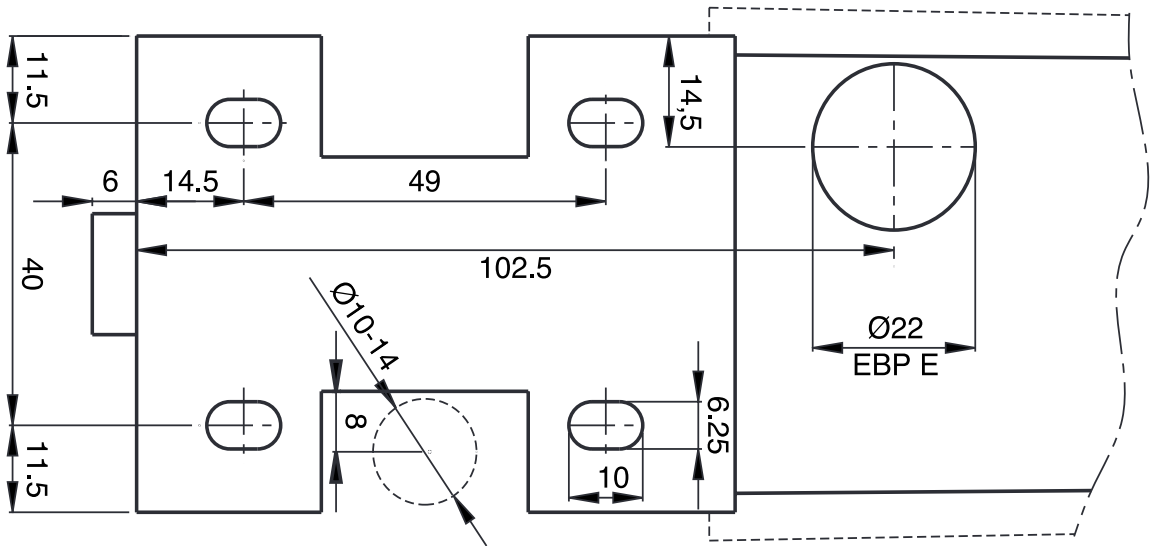
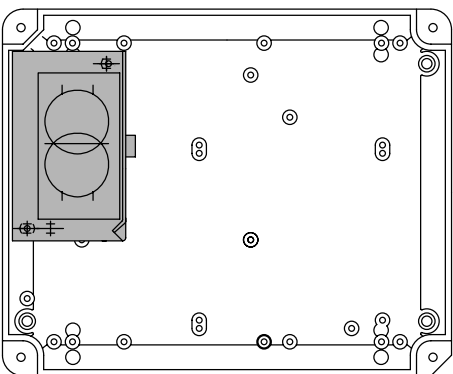
Via Lago di Vico, 44
 36015 Schio (VI)
 Tel.naz. 0445 696511
 Tel.int. +39 0445 696533
 Fax 0445 696522
 Internet: www.bft.it
 E-mail: sales@bft.it



Mod.	EBP - EBPES2 - EBPET5 - EBPES0			
Alimentazione Power supply Alimentation Stromversorgung Alimentação	EBP 230 230V ~ ±10% 50/60Hz	EBP 110 110V ~ ±10% 50/60Hz	EBP 24 110/230V ~ 24V ~ ±10% 50/60Hz	EBP 12 12V ~ ±10% 50/60Hz
Corrente di spunto Breakaway current Courant de démarrage Spitzenstrom Corrente de arranque Corrente de tomada de força	400mA	840mA	15A	24A
Corrente di mantenimento serratura attivata Current for keeping the lock picked up Courant de maintien de serrure bloquée Haltestrom angeschlossen Elektroschloß Corrente de mantenimiento serratura activada Corrente de manutenção da fechadura excitada	150mA	280mA	1,45A	3A
Temperatura di utilizzo Working temperature Temperature d'utilisation Betriebs Temperatur Temperatura de funcionamento Temperatura de utilização	-20° ÷ +55°			
Grado di protezione Case protection Degré de protection Schutzgrad Grau de protecção	IP44			



**EBP24
EBPE24**



1:1